

Venue Hire

Mary Thomas Centre

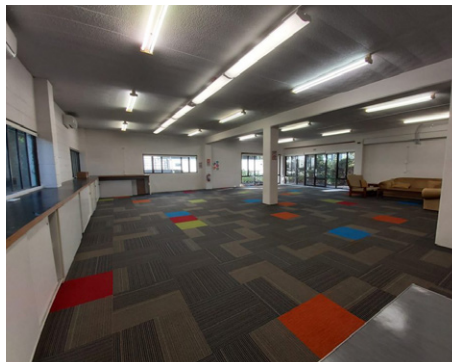
Takapuna Community HUB
takapuna 09 486 4529

ANCAD facilitates the hiring of three meeting spaces within the Mary Thomas Centre in Takapuna. Please contact us for more information.



CHANNEL VIEW LOUNGE

- Capacity 80 people.
- Morning 8:00am–12noon
Afternoon 1:00pm–5:00pm
Evening 6:00pm–10:00pm
- Commercial rate: \$50 + GST per hour (up to 4 hours).
- Community (NFP) rate: \$25 + GST per hour (up to 4 hours).
- Kitchen \$15 + GST one off charge.



ST ANNE'S ROOM

- Capacity 60–80 people.
- Morning 8:00am–12noon
Afternoon 1:00pm–5:00pm
Evening 6:00pm–10:00pm
- Commercial rate: \$50 + GST per hour (up to 4 hours).
- Community (NFP) rate: \$25 + GST per hour (up to 4 hours).
- There is a kitchenette in the St Anne's Room.



WYN WILLIAMS ROOM

- Capacity 20–30 people.
- Morning 8:00am–12noon
Afternoon 1:00pm–5:00pm
Evening 6:00pm–10:00pm
- Commercial rate: \$36 + GST per hour (up to 4 hours).
- Community (NFP) rate: \$18 + GST per hour (up to 4 hours).

FOR MORE INFORMATION:

Mary Thomas Centre | 3 Gibbons Rd, Takapuna, Auckland
Channel View Lounge: accounts@ancad.org.nz | 022 095 3462
St Anne's Room and Wyn Williams Room: hub@ancad.org.nz | 0800 426 223

Takapuna Community hub
Kotahitanga



AUCKLAND NORTH
COMMUNITY AND DEVELOPMENT
Te Runanga Ratonga Hāpori o Te Raki-Pae-Whenua