



Here for good



New Zealand Red Cross
in your community and overseas

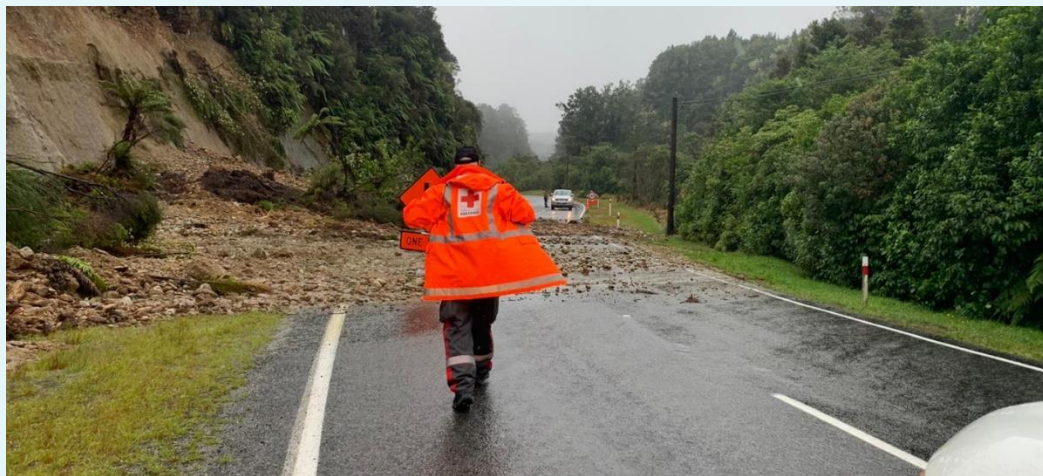
What we stand for | Tā mātou Kaupapa

Our mission is to improve the lives of vulnerable people by mobilising the power of humanity and enhancing community resilience.

Our Seven Fundamental Principles | Ngā Mātāpono Taketake:

- ✓ Humanity - Te Ngākau Atawhai
- ✓ Impartiality - Te Tōkeketanga
- ✓ Neutrality - Te Whakaraupapa
- ✓ Independence - Te Tū Motuhake
- ✓ Voluntary Service - He Ratonga Tūao
- ✓ Unity - Te Kotahitanga
- ✓ Universality - O te Ao

Disaster and emergency support



Red Cross people are part of their community.

We help to:

- **prepare** for emergencies and build stronger communities.
- **respond** during and after an emergency.
- **recover** as communities rebuild and restore well-being and connections.

The New Zealand Disaster Fund

The Fund has two purposes:

- 1. Support communities affected by Cyclone Gabrielle and the Auckland/Northland floods**
- 2. Help communities around New Zealand prepare for future disasters and climate change**

- Thanks to generous donors, **we've raised \$27 million and committed over \$20 million in support**
- Businesses, trusts and foundations have donated nearly half the \$27 million
- **100%, including interest, goes to support communities.** Administration is covered by other funding.

Fund programmes

The Fund is being spent across three programmes:

1. The Response and Recovery

Supported our immediate response on the ground and is funding a range of longer-term recovery initiatives such as Red Cross Home Bundles.

Allocated: \$9 million

2. Partnership Grants

Provides grants to organisations supporting community response and recovery.

Allocated: \$13 million

3. Investment in resilience

Focused on better preparing for future events.

Budget: \$6 million

How we are helping

The early response phase

Disaster Welfare and Response Teams (DWST)

- Deployed to provide practical and psychosocial support
- Provided stretchers, bedding and other supplies
- 8,000 given hours in support
- 127 volunteer DWST members and Red Cross staff on the ground

Other assets provided

- Satellite phones
- Fuel-powered generators
- Supporting clean-up by providing clean-up kits, first aid kits, waterblasters, dehumidifiers and hygiene products.
- Emergency food parcels
- Water supply repairs



How we are helping

Partnership programme

- Community grant scheme focused on hardship or vulnerability
- Addressing basic needs – shelter, food, water & warmth
- Supporting community recovery - mental wellbeing
- \$12 million committed in total by August – 166 grants, including:
 - \$3 million to the Hawke's Bay Disaster Relief Trust
 - \$1.1 million to the Wairoa Liveable Homes Fund
 - A further \$8 million in grants made
- Examples include temporary accommodation, food, clothing, clean-up equipment, home supplies, septic tank repairs, water pumps, generators, mental health support programmes.



Red Cross Home Bundles – Hei Āhuru Mōwai

Ongoing recovery

- \$8 million committed to help households replace damaged items
- Whiteware, beds and bedding, living room furniture, heaters
- Working with local councils and other organisations to identify and refer eligible families
- Expected 700+ families will be supported
- Underway in Auckland, Wairoa, Te Karaka and Tolaga Bay.
- Extending into other affected areas.



Lessons learned so far

- Clearly define the “swim lane” we operate in.
- Work in partnership with other agencies and funders.
- Respond to the community needs.
- Embed the learnings from previous experience.
- Balance ambition with capacity.
- Simplify process.
- It’s a marathon not a sprint.

Contact us



redcross.org.nz



0800 733 27677 (0800 RED CROSS)



@NewZealandRedCross



@NZRedCross



linkedin.com/company/new-zealand-red-cross/